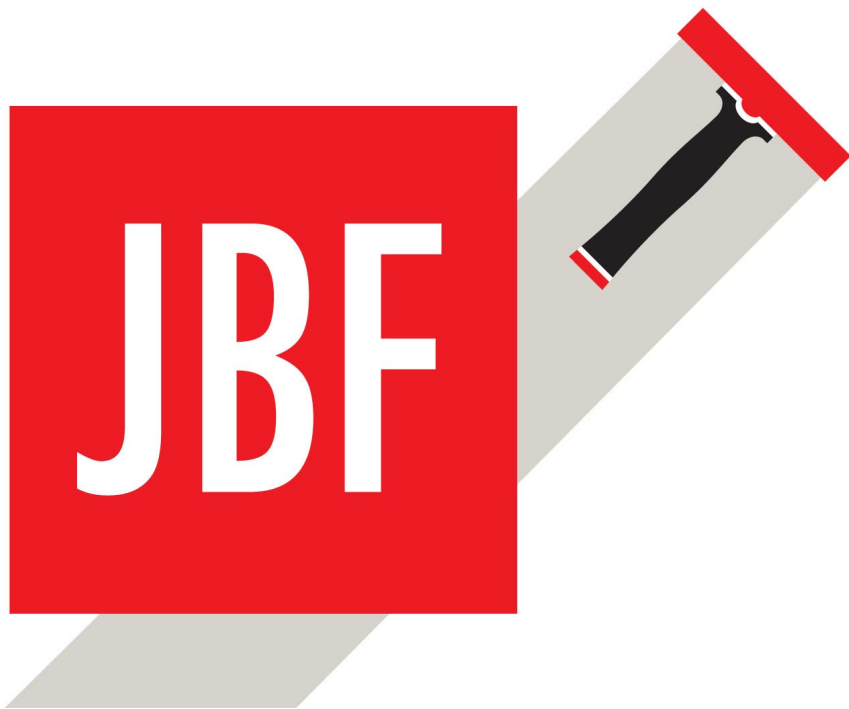




**SF ONLINES (M) SDN BHD** (923 653-U)

Email: [mail@sfonlines.com](mailto:mail@sfonlines.com) Website: [www.sfonlines.com](http://www.sfonlines.com)



THE MANUFACTIRER OF  
**TRIUMPH** SCRAPERS

323, JALAN MAHKOTA, TAMAN MALURI, CHERAS, 55100 KUALA LUMPUR WILAYAH PERSEKUTUAN MALAYSIA  
WEBSITE: [www.sfonlines.com](http://www.sfonlines.com) EMAIL: [mail@sfonlines.com](mailto:mail@sfonlines.com) TEL:03-9285 4435 FAX:03-9281 8546



**Ironlak**  
Interior. Exterior. Paint





## The TRIUMPH scraper does not scratch glass

By glass specialist Gary Mauer

Because the hardness of metal scrapers and glass is very similar, a TRIUMPH scraper used as directed will not scratch uncoated glass. For the same reason it is very difficult to scratch glass using a scraper improperly.

Chopping at a window with a scraper will not cause a scratch, unless done with such force the glass may break. For obvious reasons we do not recommend attempting this.

There is a simple, safe way to prove scrapers do not scratch glass. While wearing protective eyewear, chop a large stone block or brick with a firmly held Triumph scraper. Chop until the edge of the blade is damaged.

Clean the blade, and then try to use it on window glass. The damaged blade will be useless for window cleaning, but you will not find scratches on the glass.

### What causes scratched glass?

To the untrained eye, scratches may all appear the same, but the truth is a variety of features and characteristics can be observed, such as curves, crush marks, or sharp turns.

### About fabricating debris scratches

Scratches may occur on poor quality tempered (toughened) glass surfaces during cleaning, as a result of a microscopic manufacturing defect called fabricating debris.

These are small (invisible to the naked eye) imperfections; small flecks of glass that become affixed to the glass surface during the heat treating process.

These defects can break loose and scratch the glass during cleaning, sometimes causing very fine "fabricating debris scratches" - best seen in direct sunlight - that are most noticeable when present in great numbers on poor quality surfaces.

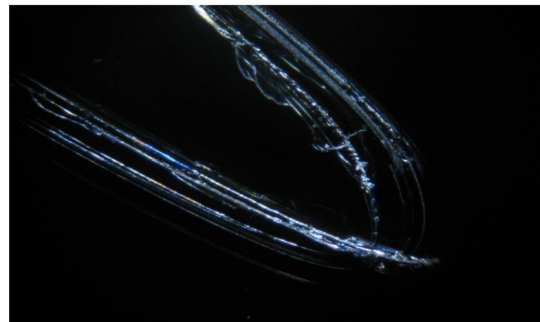


Figure 1. Scratches caused by a rock.

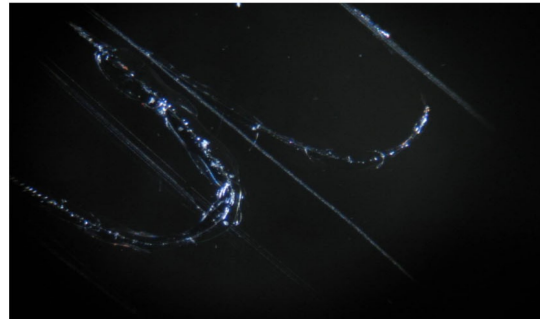


Figure 2. Scratches caused by sandpaper.

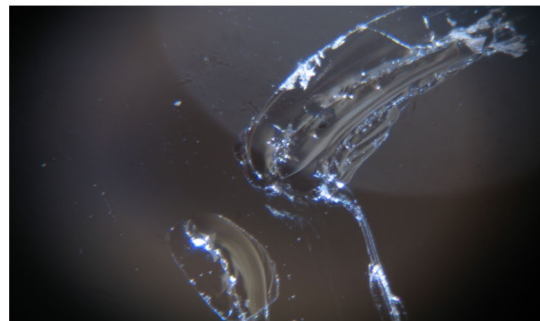


Figure 3. Scratches caused by a power screwdriver bit.





# TRIUMPH MK 3 STRAIGHT

## Eight Times More Efficient

Double-edged 6-inch blades give you eight times the scraping width as compared to most ordinary scrapers. TRIUMPH MK3 STRAIGHT comes with the original and popular TRIUMPH carbon steel blade, but can also be used with TRIUMPH stainless steel blades. All blades are easy to change or rotate without use of a screwdriver or other tools.



Sharp

The sharp double edge blade is securely held in the handle's reinforced channel



Protected

Snap on the protective cover when the scraper is not in use. The cover is available with or without rubber squeegee



Color Signal

The red color signals: "Attention! Sharp blade." All JBF replacement blades are supplied in a safe dispenser with room for worn-out blades



Secure

Anti-slip ribs provide a secure hold



Improved

The TRIUMPH MK 3 is an improved model of the well-known TRIUMPH MK 2

www.jbf.dk







**SF ONLINES (M) SDN BHD** (923 653-U)

Email: [mail@sfonlines.com](mailto:mail@sfonlines.com) Website: [www.sfonlines.com](http://www.sfonlines.com)



A JBF SCRAPER IS ONE OF THE MOST IMPORTANT TOOLS IN EVERY TOOL BELT

It easily removes paint, tape, stickers, construction debris, algae etc. All scrapers are carefully designed to secure the blade and to hold it perfectly straight.



**THE ULTIMATE CLEANING TOOL**



FIND A JBF SCRAPER THAT EXACTLY MATCHES A SPECIFIC CLEANING JOB

JBF scrapers are available in different models with blade-lengths up to 150 mm, so that all glass and hard surfaces can be easily cleaned. HANDY300 is especially suitable for cleaning surfaces, where it is difficult to reach without getting an awkward hand position. Insert a 70 mm stainless steel HANDY blade, and the scraper becomes the perfect tool to clean the insides of fish tanks. The shorter blade makes it easier to avoid damaging the silicone adhesive bonding of the fish tank.

323, JALAN MAHKOTA, TAMAN MALURI, CHERAS, 55100 KUALA LUMPUR WILAYAH PERSEKUTUAN MALAYSIA  
WEBSITE: [www.sfonlines.com](http://www.sfonlines.com) EMAIL: [mail@sfonlines.com](mailto:mail@sfonlines.com) TEL:03-9285 4435 FAX:03-9281 8546





## The Use of Scrapers in Window Cleaning

Scrapers are one of the most important items in a window cleaner's tool belt. Windows regularly need heavier cleaning than soap, water and washer sleeve can provide. To remove paint, tape, stickers and construction debris like stucco or caulk, a razor-sharp scraper is a must.

Scrapers are precision instruments that must be used and maintained properly. They are also extremely sharp, so great care must be taken in their use, handling and storage.

Window cleaning scrapers are available in blade-lengths up to 6 inches, so large areas of glass can be cleaned with less motion.

### How to Scrape

There are several important rules to consider when scraping:

- Only scrape on wet glass, adding soaps helps even more.
- Only push a scraper, never pull it back. Small bits of glass debris (see below) can get caught under the blade and scratch the glass.
- Apply even pressure holding the blade flat against the glass.
- Approach edges slowly so you don't damage frames.
- Never scrape windows with film tint applied, the scraper will cut it and even lift it off the glass.

### Caution – Watch out for Glass Debris Scratches

Believe it or not, some new glass is delivered with small (invisible to the naked eye) imperfections; small flecks of glass that become affixed to the glass surface during the manufacturing process. Windows manufacturers don't actually admit it's there, but it is. Scraping windows with "debris" can be hazardous to your financial health; the debris can break loose and scratch the glass. If you feel or hear little "tic-tic-tic" sounds while scraping, STOP SCRAPING.

For more information please read the part "Tempered glass issues" at the website [www.iwca.org](http://www.iwca.org).

### Important!

Never use a scraper on a dry surface. We also recommend lifting the scraper off the glass at the end of each stroke before beginning new stroke.





### IBF GLASS SCRAPER PRICE LIST

Image	Stock Code	Product Name	Q/C	P 1
	HCT 0601	MK3 TRIUMPH GLASS SCRAPER-STRAIGHT	75	71.90
	HCT 0602	MK3 TRIUMPH GLASS SCRAPER-ANGLE	75	85.90
	HCT 0603-CS	MK3 0.20MM*150MM REPLACEMENT BLADE-C.S. (25PCS)	100	81.90
	HCT 0603-SS	MK3 0.15MM*150MM REPLACEMENT BLADE-S.S. (25PCS)	100	99.90
	HCT 0621	HANDY MK2 GLASS SCRAPER-STRAIGHT (CARDED)	87	28.90
	HCT 0622	HANDY MK2 GLASS SCRAPER-ANGLE (CARDED)	250	25.90
	HCT 0623	HANDY 300 GLASS SCRAPER-ANGLE (CARDED)	100	35.90
	HCT 0624-CS	HANDY MK2 0.20MM*80MM REPLACEMENT BLADE-C.S.(5PC)	1000	12.90
	HCT 0624-SS	HANDY MK2 0.15MM*80MM REPLACEMENT BLADE-S.S.(5PC)	1000	15.90
	HCT 0626-SS	HANDY MK2 0.15MM*70MM REPLACEMENT BLADE-S.S.(5PC)	100	13.90
	HCT 0627-SS	HANDY MK2 0.15MM*70MM REPLACEMENT BLADE-S.S.(10PC)	100	24.90
	HCT 0628-SS	HANDY MK2 0.15MM*70MM REPLACEMENT BLADE-S.S.(25PC)	144	55.90